



Canadian Embroiderers' Guild London
SUMMER WORKSHOP 2025

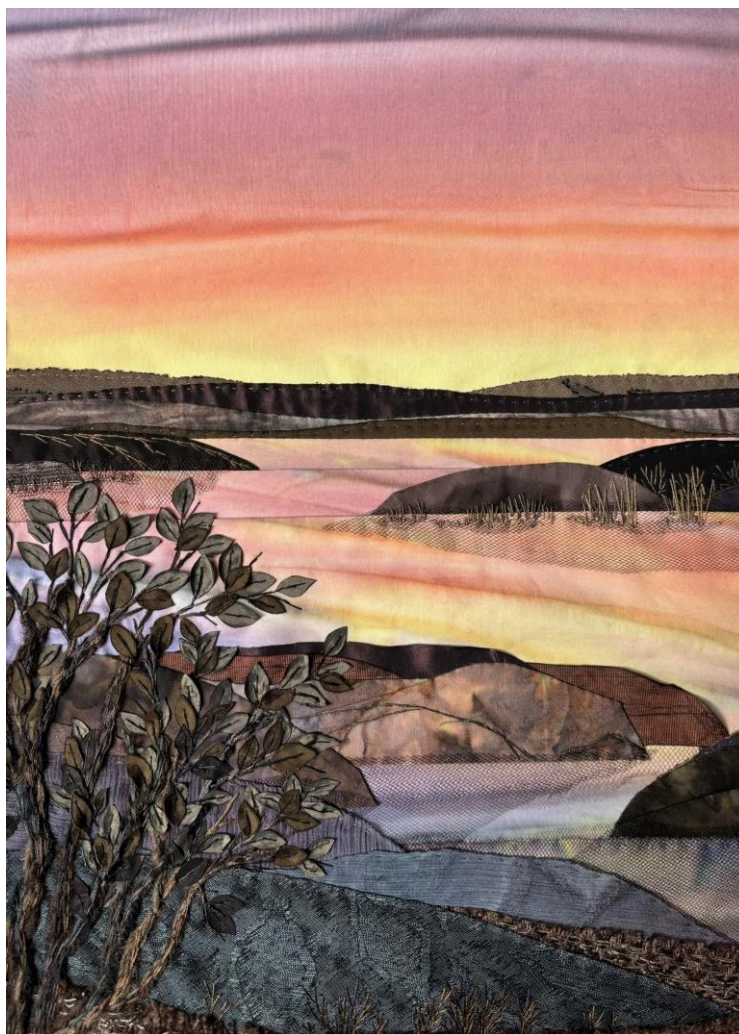
JULIE GARCIA

FABRIC LANDSCAPES: Concept to Completion

Monday, June 2 - Wednesday, June 4, 2025

9:30 a.m. – 4:30 p.m. John Labatt Visual Arts Centre, Western University

Overview: In this 3 day workshop, students will create their own hand stitched landscape art. Beginning with fabric painting to create sky fabric, students will learn the step by step process of designing and building a layered landscape and adding stitchery elements and details to create a unique and dimensional work of art. **Skill level:** all levels.



Class size: 20 plus a facilitator

ARTIST BIOGRAPHY: Julie is a Canadian fibre artist and educator who has been creating textile art for over thirty years. Raised on the Prairies, her work is inspired by the vast Canadian landscape and the challenge of creating peaceful, paint-like artwork with fabric and thread. Originally a quilter taught by her mother, Julie

created her first fabric landscape in a class with Judith Baker Montano. The combination of quilting and embroidery to create framed wall art moved Julie to develop her own unique textile compositions.

Julie studied Clothing and Textiles at the University of Manitoba and works as a professional textile artist, creating landscapes that combine fabric painting, quilting and freestyle hand embroidery. Her fabric landscapes can be found in corporate and private collections in North America and in Europe. She continues to experiment in the fibre medium and to develop resources for other makers who share her love of stitching.

Website: www.juliegarcia.com Instagram: [@jgarciafabricart](https://www.instagram.com/jgarciafabricart)

YouTube: www.YouTube.com/@juliegarciafabricart



Exhibitions and Awards: visit www.juliegarcia.com/exhibits

ARTIST STATEMENT: Growing up in rural Manitoba, I developed a deep appreciation for the expansive views and quiet beauty of the Canadian Prairies. My inspiration is deeply rooted in the divine energy felt under the open sky and observing the subtle hues and intricate details in nature. The natural colours and surface designs around me influence the direction of my work, and by interpreting these compositions with fabric and thread, I invite the viewer to pause and look deep into the scene. Each sky fabric is hand-painted to create a

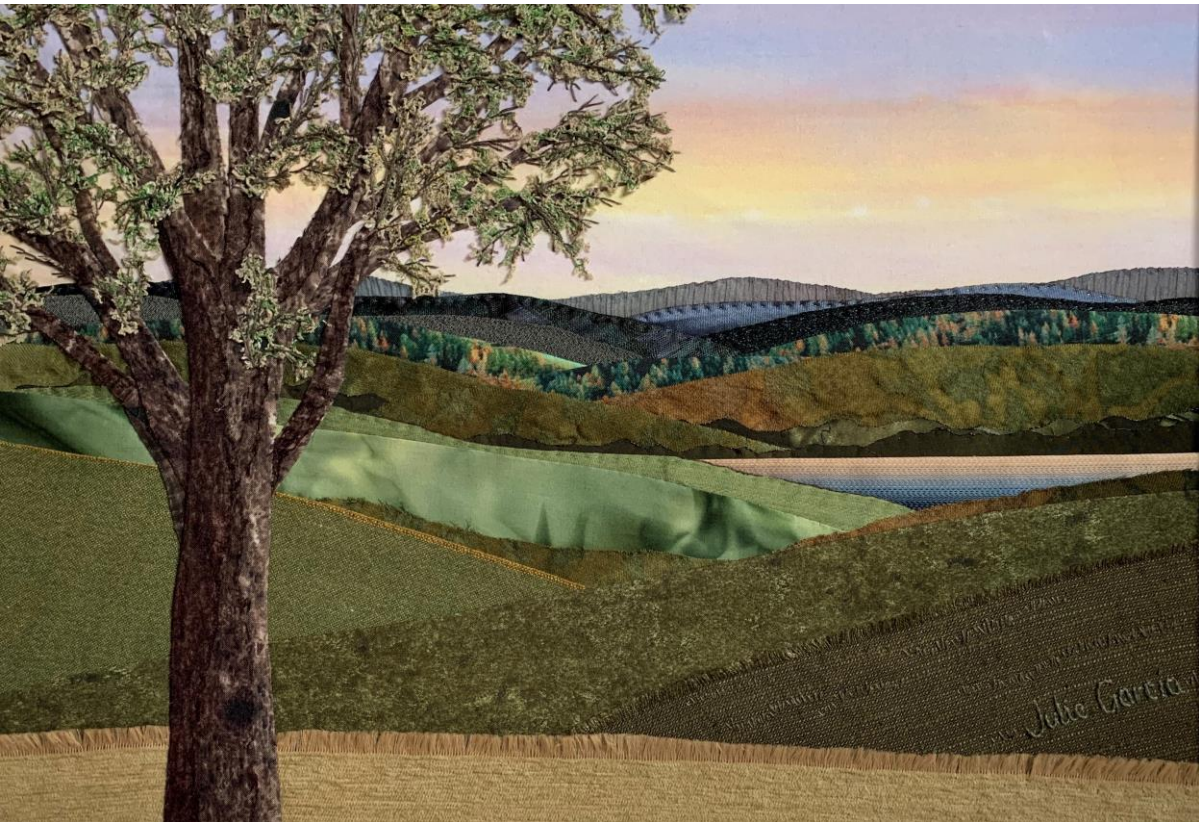
calming, realistic effect that brings the landscape to life. Stitched layers of fabric and thread capture the elements of the landscape. Stitch by stitch, I want the viewer to not only fall in love with the subject matter, but also with the remarkable range and possibility of the the textile medium.

***Members' fee: \$300**

***Non-members' fee: \$375 *Kit
fee: \$20 (approx)**

Cancellation/Refund Policy

For cancellation or refund information, please refer to our website's **Home Page** to access the **General Information** document.





Canadian Embroiderers' Guild London
SUMMER WORKSHOP 2025

JULIE GARCIA

FABRIC LANDSCAPES: Concept to Completion

Monday, June 2 - Wednesday, June 4, 2025

9:30 a.m. – 4:30 p.m. John Labatt Visual Arts Centre, Western University

Workshop Kit:

Kit fee: \$20 to be paid to the teacher

- 100% cotton fabric for sky painting, white, plain weave, 1/2 yard piece per person

Provided by Instructor:

All fabric paint

Selection of favorite fabrics and embroidery threads for students to use

Supply List:

Muslin for backing 18" X 22"

Interfacing 18" X 22", fusible, medium weight, white

Selection of landscape-coloured fabrics (greens, browns, greys, florals)

- Fabrics might include quilting cottons, batiks, organza, velvet, polyester crepes, etc.

Look for colours that would be found in the landscape you would like to make with a variety of weights and textures. Don't edit anything out! Scrap sized pieces work well.

Cheesecloth (small piece)

Basic sewing thread in a few colours – light grey, dark grey, green, blue, dark brown

Metallic thread in any colour (Guterman gold, copper or variegated)

Selection of a few 6-strand embroidery threads in a variety of colours including greens & brown/dark grey for tree details. Optional...perle cotton, 4mm silk ribbon or other fancy yarns

Seed beads, small buttons and other notions are welcome, but not required

Pins

Fabric scissors

Sharp embroidery needles

Chenille needle (size 22/24)

Thimble

Clear ruler

Fabric Basting Glue (no-sew)

16" x 20" foam core

16" X 20" mat (10"X14" opening) ** this is a working mat, however it could be used for final framing

2 Plastic boards (for painting – must be large enough to hold a fat quarter piece, smooth finish)

2-3 small plastic containers such as recycled margarine containers

2 foam brushes (2-inch)

Plastic plate or lid (ice cream pail lid)

Water mister

Apron

Plastic/latex gloves (for fabric painting)

Sponge/paper towels for clean-up

Blank 8.5"X11" paper or sketchpad

Pencil and eraser

Small container/bag for personal garbage

Photo for inspiration (optional if student wants to make a personalized piece)

Tips to choosing your photo: Landscape images that show distance work the best. Photo should have a background, midground and foreground. Photos that include a body of water are preferred. However, images are being used for inspiration, so we can work around anything. Patterns will be drawn with guidance from our reference photos.

Miscellaneous:

*Coffee mug *Name tag if you are a CEG member